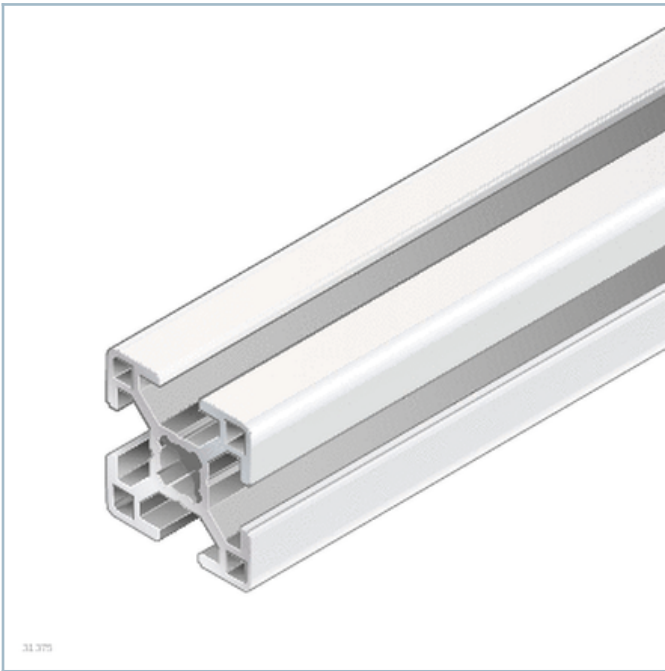


Strut profile 30x30



31.375

Product description

[Quick & Easy profile finishes](#)

[Introduction to strut profiles](#)

Technical data

[Quick & Easy profile finishes](#)

Dimensions

Strut profile 30x30

30x30	
A = 3,1 cm ²	
I _x = 2,8 cm ⁴	
I _y = 2,8 cm ⁴	
W _x = 1,8 cm ³	
W _y = 1,8 cm ³	
I _t = 0,29 cm ⁴	
W _t = 0,33 cm ³	
m = 0,9 kg/m	
19175	

Ordering codes

The following caps with holes are needed:

30x30 signal gray (1 item)





30x30 black (1 item)

The following cover caps are needed:

30x30 signal gray (1 item)

30x30 black (1 item)

	L			ESD	No.
	mm				
Strut profile 30x30	50 ... 6070		1		3842990720
Strut profile 30x30 M8/-	50 ... 6000		1		3842990721
Strut profile 30x30 M8/M8	80 ... 6000		1		3842990723
Strut profile 30x30 M8/D11	70 ... 6000		1		3842990724
Strut profile 30x30 D7,8/D7,8	60 ... 6000		1		3842992965
Strut profile 30x30 D11/-	50 ... 6000		1		3842990722
Strut profile 30x30 D11/D11	60 ... 6000		1		3842990725
Strut profile 30x30 D11/D11V	60 ... 6000		1		3842990726
Strut profile 30x30, 20xL=6070 mm	6070	20			3842557206
Strut profile 30x30 Q&E	50 ... 6070		1		3842993703
Cover cap 30x30, signal gray			100		3842548744

	L			ESD	No.
	mm				
Cover cap 30x30, black			20		3842548745
Cover cap with hole 30x30, signal gray			20		3842548774
Cover cap with hole 30x30, black			20		3842548775
Strut profile 30x30	6070		1		3842557216

Quick & Easy profile finishes

Standard profile finishes (note minimum length)	M8 / D7.8 / D11 / DB11
Customized profile finishes ($L_{\max} = 4900$ mm) ¹⁾	DI / DIS / MT / MTS / MI / MIS / DG

1) $DG_{\max} = 45^\circ$; $L_{\min1} / L_{\min2} = 352 / 404$ mm